



SHIKSHA CLASSES

Sub : Science
Class : IX

Question Paper
6. Tissues

Total Marks : 30
Time : 1 Hr.

Section A(Each 1 marks)

Q.1) The unit of nervous system is

- a) Cytosol b) Axon c) Neuron d) Dendrite

OR

What is the function of ligament ?

Q.2) Which of the following is not the part of the phloem?

- a) Sieve tube b) Companion cell c) Tracheids d) Vessels

OR

Lysosome is a cytoplasmic organelle containing enzymes that break down biological polymers. Lysosomes function as the digestive system of the cell. It is also called the suicide bag of the cell because

- a) It causes any cell to commit suicide b) Its enzymes digest the cell itself
c) Its enzymes kill surrounding cells d) None of these

For question numbers 3 to 5 two statements are given- one labeled Assertion (A) and the other labeled Reason (R). Select the correct answer to these questions from the codes (a), (b), (c) and (d) as given below:

- a) Both A and R are true, and R is correct explanation of the assertion.
b) Both A and R are true, but R is not the correct explanation of the assertion.
c) A is true, but R is false.
d) A is false, but R is true

Q.3) **Assertion (A)** : Skeletal muscles are also known as voluntary muscles.

Reason (R) : The activity of the skeletal muscles is under the voluntary control of the nervous system.

Q.4) **Assertion (A)** : Parenchyma cells help in storage of food.

Reason (R) : Parenchyma cells are the main seats of photosynthesis.

Q.5) **Assertion (A)** : Vascular or conductive tissue is a distinctive feature of complex plants.

Reason (R) : Vascular tissue has made survival of complex plants possible in terrestrial environment.

Q.6) Meristematic tissues are those which help in increasing the length and growth of the plant. Which of the following statements given below is correct about the meristematic tissue?

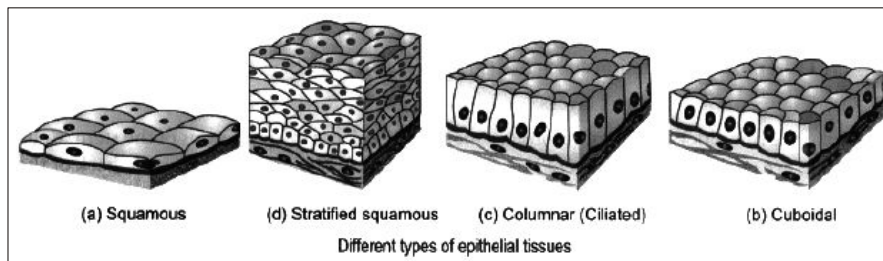
- a) It is made up of cells that are incapable of cell division.
- b) It is made up of cells that are capable of cell division.
- c) It is composed of single type of cells.
- d) It is composed of more than one type of cells.

OR

Epithelial tissue always has an exposed outer surface and an inner surface anchored to connective tissue by a thin, non-cellular structure called the

- a) Nonstratified layer
- b) Stratified layer
- c) Basement membrane
- d) Fibroblast

Q.7) Observe the following figure and answer any two question from 5(i) to 5(iii) (2)



- i) What kind of epithelium is present in squamous tissue?
 - a) flat
 - b) curved
 - c) columnar
 - d) none of these
- ii) Columnar epithelium is present in
 - a) Lungs
 - b) Intenstine
 - c) Heart
 - d) Kidney
- iii) ----- is glandular epithelium.
 - a) Cuboidal
 - b) Columnar
 - c) Stratified
 - d) both a and b

Q.8) The flexibility in plants is due to _____ tissue.

- a) permanent tissue
- b) collenchyma
- c) sclerenchyma
- d) prosenchyma

Q.9) The tissue composed of the living, thin-walled, polyhedral cell

- a) collenchyma
- b) parenchyma
- c) sclerenchyma
- (d) striated muscle

Q.10) Areolar connective tissue is found:

- a) between skin and muscle
- b) around blood vessel
- c) around nerves and bone marrow
- d) All of these

Q.11) Two slides of plant tissues, parenchyma and sclerenchyma, are shown to you. You can identify the sclerenchyma by the:

- a) position of nucleus
- b) size of the cell
- c) thickness of cell wall
- d) location of nucleus

Q.12) Which of the following statements is incorrect?

- a) Some tissues in plants divide throughout their lifespan.
- b) Animals have more dead tissues as compared to plants.
- c) Cells in animals are more uniform as compared to plants.
- d) There is no demarcation of dividing and non-dividing regions in animals.

- Q.13) The characteristic feature of sclerenchyma is:
a) living cells with highly thickened walls b) living cells with thin walls
c) dead cells with thin walls d) dead cells with thickened walls
- Q.14) The shape of striated muscle cells is:
a) cylindrical (b) spindle-shaped
(c) elongated with tapering ends (d) spherical

Section B (Each 2 marks)

- Q.15) Answer the following questions.
a) What is the lining of blood vessels made up of?
b) What is the lining of small intestine made up of?
c) What is the lining of kidney tubules made up of?
d) Where are the epithelial cells with cilia found?
- Q.16) Why is the epidermis present as a thick waxy coating of cutin in desert plants?

OR

Explain the difference between voluntary and involuntary muscles

Section C (Each 3 marks)

- Q.17) What is the function of bone, cartilage and ligament ?

OR

Write down differences between Plant and Animal tissues.

- Q.18) Why are xylem and phloem called complex tissues? How are they different from one other ?

Section D (5 marks)

- Q.19) What is a permanent tissue? Classify permanent tissue and describe them.

OR

What is a neuron? Write the structure and functions of a neuron.

BECOME AN ACE IN JEE & NEET



SHIKSHA CLASSES

Believe & Achieve

JEE | NEET | Previsa (8-10)

📞 8625055707 | 8623085707 🌐 shikshaclasses.co.in

M-19, MHADA Colony, Khat Road, Bhandara



Learn with Jaiswal sir